



## EXPLORER RE8524TA2

### EXPLORER RE8524TA2

Explorer is Pace American's toy hauler, sport-camper for the person on the go! If you are looking to haul motorcycles, ATV's, go-karts, mountain bikes, kayaks, or hunting equipment, Explorer makes the perfect camping trailer to haul your outdoor gear.

Explorer trailers start with our rugged steel-framed Rallye auto platform for added strength, not the typical wood framework of some other manufacturers. Add in travel camper features such as beds, dining, kitchen, and bathroom amenities to make this the perfect living space for the well-equipped outdoorsman on the road. See our page or ask your local dealer what options are right for your outdoor adventures.

Explorer 8.5' wide bumper pull tag models are available in lengths from 18'-28' to meet your equipment hauling needs. All models are backed by our 3-year limited warranty, industry leading customer service, and a nationwide dealer network offering sales, service, and parts.

### STANDARD FEATURES

- 11 Standard Exterior Colors
- Galley Sink with Faucet in Finished Countertop
- Cabinetry in Gentle Maple
- Removable Pedestal Table
- 24-1/2 Gallon Gray Water Tank
- Truck Body Style Flat Top Roof Design
- Automotive Style D-Bulb Weatherstripping
- Dexter EZ Ride Spring Axles
- Electric Brakes with Breakaway Switch, including Battery & Trickle Charger
- Chip Resistant Undercoating
- Underbelly Moisture Barrier
- Fully Enclosed Combination Shower/Bathroom
- Power Converter
- Precision, Jig Built, Solid Core Double Rear Swing Doors with Semi-Style Camlocks and T-Nuts.
- 1.1 cu ft Microwave
- 2.5 cu ft Refrigerator Inside Finished Cabinet
- 30 Gallon Water System w/City Water Fill & Dump Valve
- 30A 110v Shorepower Cord (25')
- 36" RV Side Door w/Stepwell
- White Vinyl Ceiling
- 3/8" Plywood Interior Walls
- 3/4" Plywood Floor
- Frames are phosphate power washed and all exposed metal is painted with premium quality paint
- (2)Interior GFI Receptacles
- Fiberglass Insulation in Walls and Ceiling
- Non-Cracking TPO Front Cap
- High-Tech Roof Sealant
- Patented Dust-Proof Sidewall Design for Strength and Cleanliness
- 12v Deep Cycle Marine Battery in Box on Tongue
- 6" I-Beam Frame
- Smooth Aluminum Fenders
- Windows- Mini Blinds
- Fire Extinguisher
- 3-Year Honest, Fast and Fair Limited Warranty
- T-Nuts on Door Strap Hinges

And More



An Awning with Patty-O-Room option helps expand the living area. They're 12' in length and fold out of the way.



Fold-up bunks in this RT give you ample sleeping room and comfort, yet fold out of the way or, with pedestal table in, double as nice dinette area seating.



# EXPLORER

## RE8524TA2

### SPECIFICATIONS RE8524TA2

Overall Length	27'10"
Interior Length	23'7"
Box Width/OA Width	8'4"/8'6"
Box Height/OA Height	9'0"
Interior Width	8'0"/6'9"
Interior Height (to center of roof bow)	6'10"
Platform Height/Ball Height	22"/21"
Rear Doors	Double
Rear Door Width	88"
Rear Door Height	76"
Axles	3500# Tandem
Brakes	Electric
Frame	6" I-Beam
Tire Size	15" Bias
Hitch Ball Size	2-5/16"
Curb Weight	5350#
Hitch Weight	936#
Exterior	.030 Smooth
Floor	3/4" OSB
Sidewalls	3/8" Plywood
Payload Capacity	1650#
GVWR	7000#

NOTE: All standards, options, special packages, construction and specifications listed are subject to change. Photography may show optional items available at additional cost. Please consult your authorized dealer for the latest product information.

### OPTIONAL EQUIPMENT

- Video Package
- Audio Package
- AC with or without Heatstrip
- Wire & Frame for AC
- Furnace
- Fold Down Bunk Bed
- Finished Partition Wall w/Door
- Generators
- Patty-0-Room
- Scissor, Stabilizer or Drop Down Jacks
- In-Floor Spare Tire Compartment
- Spare Tire w/ Aluminum Rim
- Interior Spare Tire Mount
- Tongue Mounted Spare
- Aluminum Helmet Holder
- Spare Tire w/ Mount
- Overhead Cabinets
- Microwave
- Rear Ramp Door
- Aluminum Tread Plate (ATP) Stoneguard
- Beavertail
- Windows with Sliders- Vertical/Horizontal/T-Slide
- Generator Prep Package
- Additional Taillights
- Back-Up Lights
- Converter- AC/DC
- Automatic Back Up Alarm
- Additional Clearance Lights
- Electrical Packages (5 to choose from)
- Aluminum or Laminate Cabinets
- LED Exterior Lighting
- Cornering Lights
- Wall Switch
- Rope Rings
- Plywood Mounting Rail
- Baseboard Heater
- Dome Light (SX or LX)
- Fluorescent Lights
- Porch Light
- Loading Light
- 500w Quartz Light
- 110v Electrical Breaker Box Upgrades
- 110v Electrical Outlets- Interior or Exterior
- E-Track: Floor or Wall

And More

The Explorer RT is a perfect trailer for taking the bikes to Sturgis or Daytona and hanging out with friends and family.



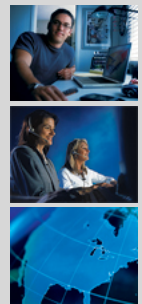
Explorer trailers let you get out without leaving all the conveniences of home.



PACE TRAILERS ARE DESIGNED AND BUILT FROM THE GROUND UP BY PROFESSIONALS WHO ACTUALLY USE TRAILERS.

OUR CUSTOMER SERVICE HOTLINE IS JUST ONE OF MANY WAYS PACE SUPPORTS YOU AFTER THE SALE. CALL US AT 800-247-5767.

FRIENDLY DEALERS FROM COAST-TO-COAST OFFERING SALES, SERVICE, AND PARTS DIFFERENTIATE PACE FROM THE COMPETITION.



Your Closest Authorized Pace American Dealer:

**SILVER MOON TRAILERS**  
**1802 COMMERCE**  
**JONESBORO, AR 72402**

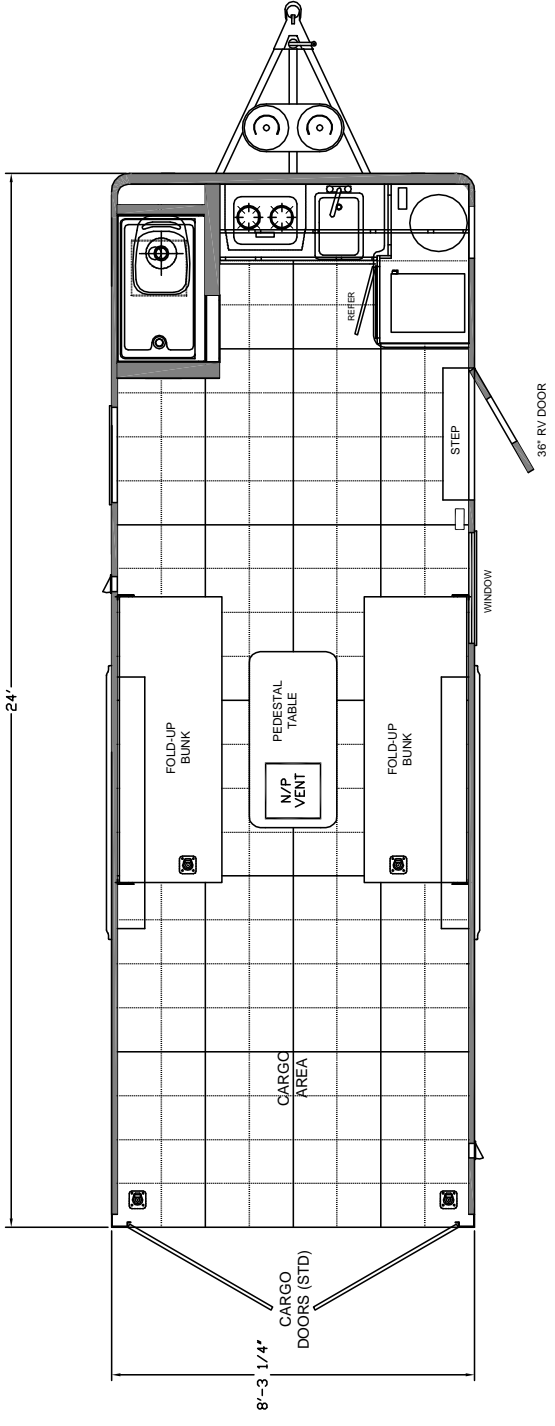
**(870)935-1645**  
**s\_moon@suddenlinkmail.com**  
**www.silvermoontrailers.net**


paceamerican.com 800.247.5767

**EXPLORER** RE8524TA2

# FLOORPLAN PLAYGROUND

DATE: \_\_\_\_\_ TITLE: PLAN VIEW MODEL: RE 8524TA2 DWG NO: \_\_\_\_\_



111550 HARTER DRIVE  
MIDDLEBURY, IN. 46540  
APPROVED BY:  DWG. BY: RAM  
SCALE: N.T.S. REVISED:

NOTES:  
GRID=12" x 12" SQUARES

REV. #	DATE	DESCRIPTION

PACE AMERICAN CLAIMS PROPRIETARY RIGHTS TO THE MATERIAL DISCLOSED HEREIN. NEITHER THIS DRAWING NOR ANY REPRODUCTION THEREOF MAY BE USED TO MANUFACTURE ANYTHING WITHOUT PERMISSION IN WRITING.